

# Frampton Verdure - Panorama (sans bordure)

Printed Linen Panels

**ZARDI & ZARDI**  
MODERN HISTORIC TAPESTRIES

**PRODUCT INFORMATION**

**PRODUCT REFERENCE(S):**

ZF.0310.01-275/250/225 Classic  
ZF.0310.05-275/250/225 Grisaille  
ZF.0310.53-275/250/225 Forest Green

**PRODUCT TYPE:** Printed Linen Panels

**FABRIC SPECIFICATION:** 100% Linen, (370 gsm)

**HEIGHT (Excl. Print Allowance):** 275/250/225 cm

**LATERAL REPEAT:** 520 cm

**No. OF DROPS:** 4

**DROP WIDTH:** 130 cm

**PRINT ALLOWANCES:**

Overlay: 1 cm per side  
Bottom: 5 cm (Mirror Bleed)

Please be aware that Printed Linen Panels can be purchased individually, and that all our products can be purchased either as Printed Linen Panels or as finished Tapestry Wall Hangings. It is of course always possible to re-size images and create bespoke designs to fit your specific requirements.

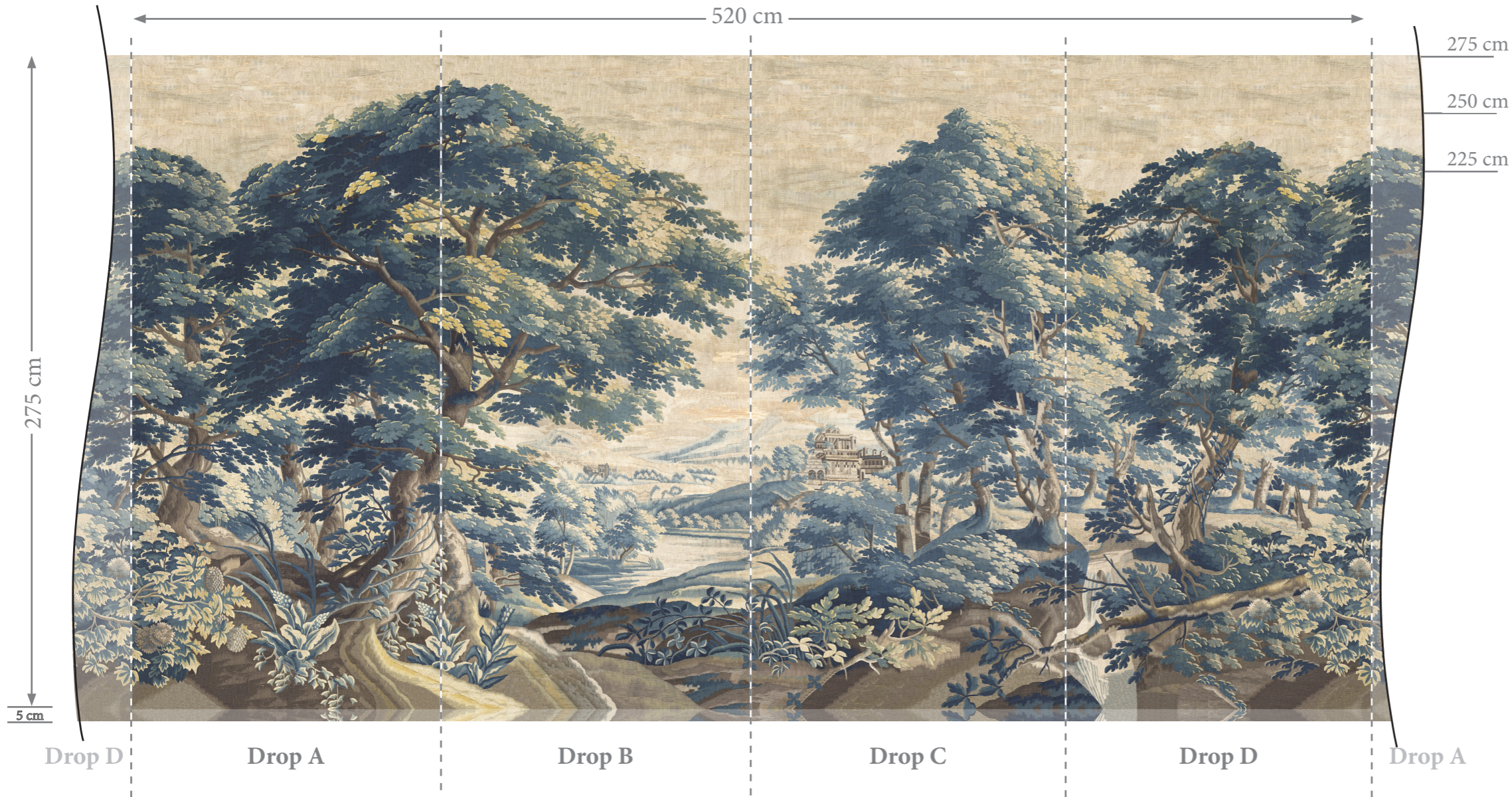
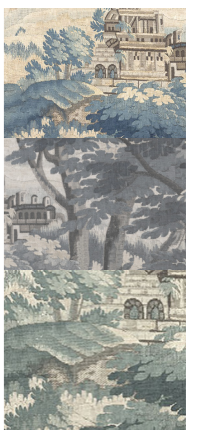
A PDF entitled 'TAPESTRY WALL HANGING & PRINTED LINEN PANEL GLOSSARY' can be downloaded from the Zardi & Zardi website via the 'Technical Information' link for an explanation of terminology used.

**COLOURWAYS**

**01: CLASSIC**

**05: GRISAILLE**

**53: FOREST GREEN**



Frampton Verdure - Panorama (sans bordure)

Colour: Classic

Product Ref: ZF.0310.01

For sales enquiries and showroom details please contact:

**ZARDI & ZARDI**

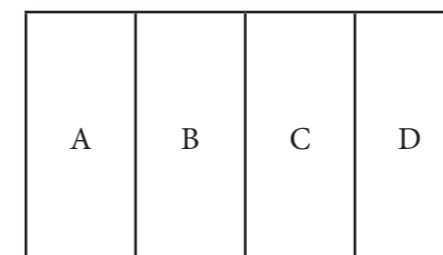
T +44 (0)1452 814777

enquiries@zardiandzardi.co.uk

www.zardiandzardi.co.uk

The Frampton Verdure is believed to have been installed in the Tapestry Room when Frampton Court was built in 1733. It is a verdure tapestry with a wide floral border depicting a pastoral scene; with a classical building above a lake in a wooded lake landscape.

**DROP LAYOUT**



**DRAWING NUMBER/VERSION/CREATOR:**  
ZF.0310/V2/RW

**DRAWING DATE:**  
10th January, 2023

DUE TO THE LIMITATIONS OF DESKTOP PRINTERS AND THE INCONSISTENCY BETWEEN DISPLAY MONITORS, THE COLOURS THAT YOU SEE ON SCREEN OR PAPER PRINT MAY NOT BE AN ACCURATE REPRODUCTION OF THE ACTUAL PRODUCT, AND SHOULD BE SEEN AS A GUIDE ONLY.