

Le Carnaval des Animaux

Printed Linen Panels

ZARDI & ZARDI
MODERN HISTORIC TAPESTRIES

PRODUCT INFORMATION

PRODUCT REFERENCE(S):
ZF.0245/0246.10-325/300/275 Aragon
ZF.0245/0246.12-325/300/275 Alba Rosa

PRODUCT TYPE: Printed Linen Panels

FABRIC SPECIFICATION: 100% Linen, (370 gsm)

HEIGHT (Excl. Print Allowance): 325/300/275 cm

No. OF DROPS: 2

DROP WIDTH: 130 cm

PRINT ALLOWANCES:
Overlay: 1 cm per side
Bottom: 5 cm (Mirror Bleed)

Please be aware that Printed Linen Panels can be purchased individually, and that all our products can be purchased either as Printed Linen Panels or as finished Tapestry Wall Hangings. It is of course always possible to re-size images and create bespoke designs to fit your specific requirements.

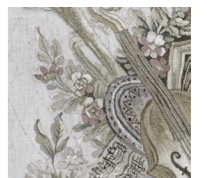
A PDF entitled "TAPESTRY WALL HANGING & PRINTED LINEN PANEL GLOSSARY" can be downloaded from the Zardi & Zardi website via the "Technical Information" link for an explanation of terminology used.

COLOURWAYS

10: ARAGON



12: ALBA ROSA



Drop A Drop B
Hawks & Swans
ZF.0245.12



Drop A Drop B
Turkeys & Herons
ZF.0246.12

Le Carnaval des Animaux
Colour: Alba Rosa
Product Ref: ZF.0245.12/ZF.0246.12

For sales enquiries and showroom details please contact:

ZARDI & ZARDI

T +44 (0)1452 814777

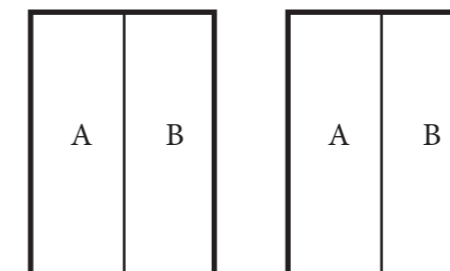
enquiries@zardiandzardi.co.uk

www.zardiandzardi.co.uk

Known as 'The Loveliest Castle in the World', Leeds Castle commissioned Zardi & Zardi to make copies of the beautiful set of five 18th century Aubusson tapestries to hang in the dining room in place of the original tapestries which were being sent away for conservation.

From the five tapestries Zardi & Zardi have created a number of unique designs including fabulous panoramic wallpaper and a variety of wall-hangings and fabrics for use as drapery, fabric walling and upholstery.

DROP LAYOUT



DRAWING NUMBER/VERSION/CREATOR:
ZF.0245/0246/V2/RW

DRAWING DATE:
12th October, 2020

DUE TO THE LIMITATIONS OF DESKTOP PRINTERS AND THE INCONSISTENCY BETWEEN DISPLAY MONITORS, THE COLOURS THAT YOU SEE ON SCREEN OR PAPER PRINT MAY NOT BE AN ACCURATE REPRODUCTION OF THE ACTUAL PRODUCT, AND SHOULD BE SEEN AS A GUIDE ONLY.