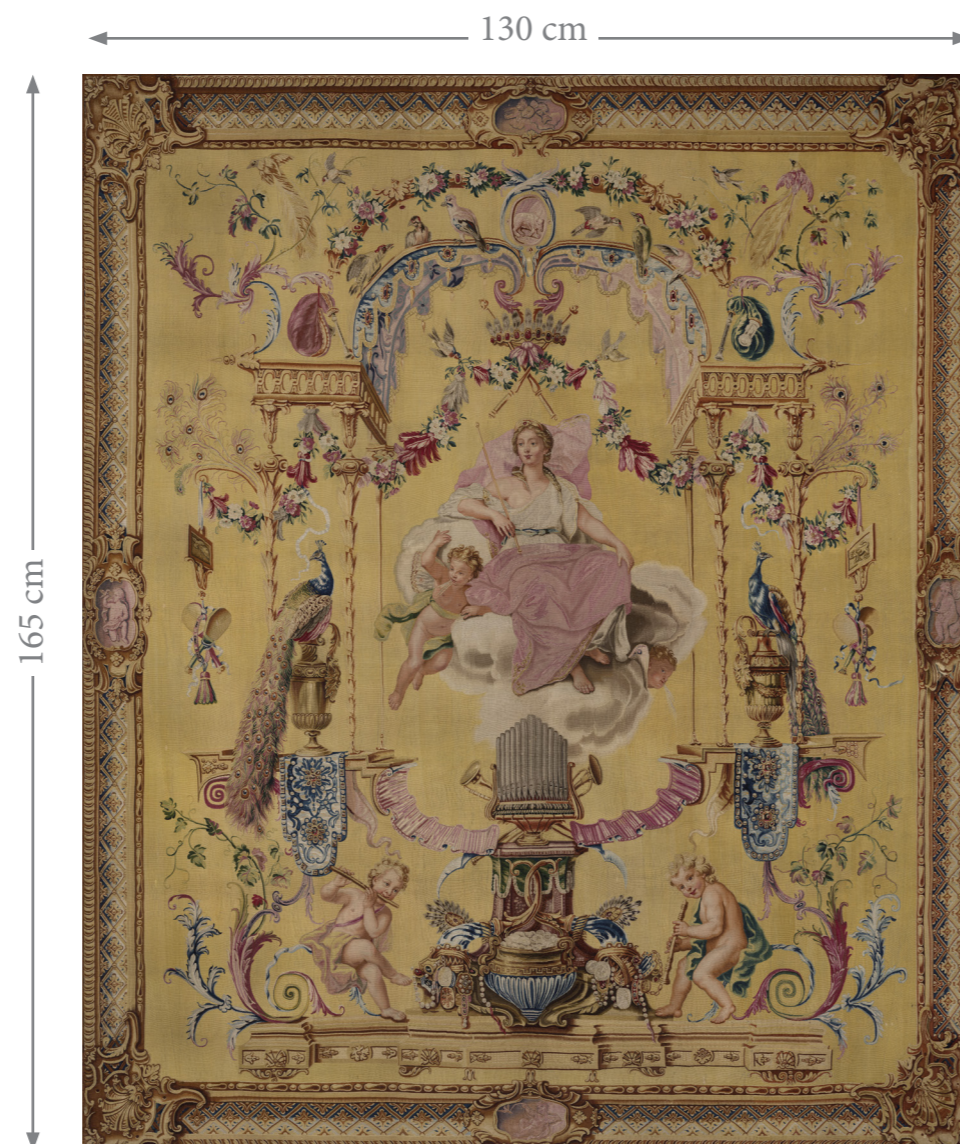


Portières des Dieux - Air (Petite)

Tapestry Wall Hanging



Drop A

Portières des Dieux - Air (Petite)
 Colour: Classic
 Product Ref: ZH.0265.01

ZARDI & ZARDI
 MODERN HISTORIC TAPESTRIES

PRODUCT INFORMATION

PRODUCT REFERENCE(S):
 ZH.0265.01 Classic

PRODUCT TYPE: Tapestry Wall Hanging

FABRIC SPECIFICATION:
 Fabric: 100% Linen, (370 gsm)
 Lining: 100% Linen, (240 gsm)
 Interlining: 100% Cotton

No. OF DROPS: 1

FINISHED DIMENSIONS: 130 x 165 cm

Please be aware that Tapestry Wall Hangings can also be purchased as a set of Printed Linen Panels to be made up to your own specification, and that it is of course always possible to re-size images and create bespoke designs to fit your specific requirements.

A PDF entitled 'TAPESTRY WALL HANGING & PRINTED LINEN PANEL GLOSSARY' can be downloaded from the Zardi & Zardi website via the 'Technical Information' link for a more detailed explanation of the terminology used.

COLOURWAYS

01: CLASSIC



For sales enquiries and showroom details please contact:

ZARDI & ZARDI

T +44 (0)1452 814777

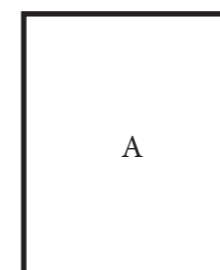
enquiries@zardiandzardi.co.uk

www.zardiandzardi.co.uk

One of the most successful series of Gobelins tapestries was the Portières des Dieux, which shows the seasons and the elements personified by classical gods and include signs of the zodiac. Air shows Juno, sitting on a cloud with wind-blowing putti blowing. They are placed above an organ and surrounded by other wind instruments. Juno is flanked by Peacocks, attributed to Juno and known to draw her chariot, set within a border of flowers and foliage.

In 1699 the painter Claude Audran III was commissioned to design this series for the Manufacture Royale de Gobelins, which had re-opened that year.

DROP LAYOUT



DRAWING NUMBER/VERSION/CREATOR:
 ZH.0265/V1/RW

DRAWING DATE:
 9th December, 2020

DUE TO THE LIMITATIONS OF DESKTOP PRINTERS AND THE INCONSISTENCY BETWEEN DISPLAY MONITORS, THE COLOURS THAT YOU SEE ON SCREEN OR PAPER PRINT MAY NOT BE AN ACCURATE REPRODUCTION OF THE ACTUAL PRODUCT, AND SHOULD BE SEEN AS A GUIDE ONLY.