

Triumph of the Gods – Panorama

Wide Matt Non-Woven Wallpaper

ZARDI & ZARDI
MODERN HISTORIC TAPESTRIES

PRODUCT INFORMATION

PRODUCT REFERENCE(S):
ZW.0263.34-325/300/275 Olympus
ZW.0263.22-325/300/275 Brutus Stone

PRODUCT TYPE: Wallpaper

WALLPAPER SPECIFICATION:
Weight: 147 gsm
Paper Type: Wide Matt Non-Woven
Hang: Overlay & cut-through
Print: Digital

HEIGHT (Excl. Print Allowances): 325/300/275 cm

LATERAL REPEAT: 1460 cm

No. OF DROPS: 10

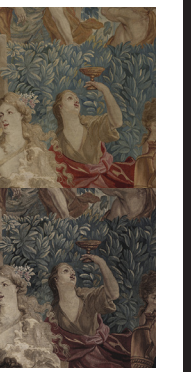
DROP WIDTH: 146 cm

PRINT ALLOWANCES:
Overlay: 1 cm per side
Bottom: 10 cm (Mirror Bleed)

PDFs WITH MORE DETAILED INFORMATION CAN BE DOWNLOADED FROM THE ZARDI & ZARDI WEBSITE VIA THE 'TECHNICAL INFORMATION' LINK

COLOURWAYS

34 OLYMPUS



22: BRUTUS STONE



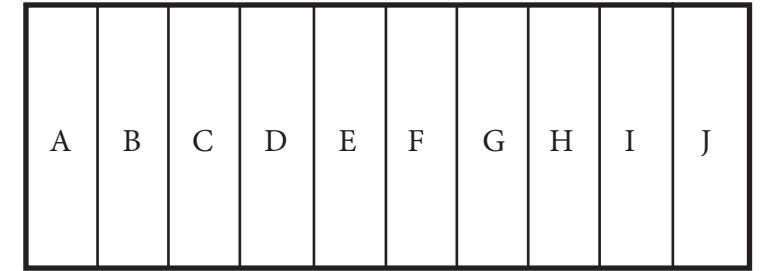
For sales enquiries and showroom details please contact:
ZARDI & ZARDI
T +44 (0)1452 814777
enquiries@zardiandzardi.co.uk
www.zardiandzardi.co.uk

Triumph of the Gods – Panorama
Colour: Olympus
Product Ref: ZW.0263.34-325

When HRH The Prince of Wales set up the trust and raised the funding to save Dumfries House for the nation, he was well aware of the massive conservation task that lay ahead. One project that required urgent attention was the conservation of the beautiful set of four tapestries that comprise The Triumph of the Gods series that hang in the Tapestry Room - a room used regularly for functions. To overcome the problem that would have been caused by their absence Zardi & Zardi was commissioned to make a set of copies to hang in their place.

From the four tapestries Zardi & Zardi have created a number of unique designs including fabulous panoramic wallpaper, and a variety of wall-hangings and fabrics for use as drapery, fabric walling and upholstery.

DROP LAYOUT



DRAWING NUMBER/VERSION/CREATOR:
ZW.0263/V2/RW

DRAWING DATE:
21st October, 2022

DUE TO THE LIMITATIONS OF DESKTOP PRINTERS AND THE INCONSISTENCY BETWEEN DISPLAY MONITORS, THE COLOURS THAT YOU SEE ON SCREEN OR PAPER PRINT MAY NOT BE AN ACCURATE REPRODUCTION OF THE ACTUAL PRODUCT, AND SHOULD BE SEEN AS A GUIDE ONLY.